

## Technical data sheet

### Polarized retro-reflective photoelectric

Part no.: 50137460

PRK15/NX-M12

#### Contents

- Technical data
- Dimensioned drawings
- Electrical connection
- Diagrams
- Operation and display
- Reflectors & reflective tapes
- Part number code
- Notes
- Further information
- Accessories



Figure can vary



## Technical data

### Basic data

|                     |                      |
|---------------------|----------------------|
| Series              | 15                   |
| Operating principle | Reflection principle |

### Optical data

|                          |  |
|--------------------------|--|
| Operating range          | Guaranteed operating range                     |
| Operating range          | 0.05 ... 8 m, With reflector TK(S)<br>100x100  |
| Operating range limit    | Typical operating range                        |
| Operating range limit    | 0.05 ... 10 m, With reflector TK(S)<br>100x100 |
| Light source             | LED, Red                                       |
| LED light wavelength     | 640 nm   |
| Transmitted-signal shape | Pulsed   |
| LED group                | Exempt group (in acc. with EN 62471)           |

### Electrical data

|                    |   |
|--------------------|---|
| Protective circuit | Polarity reversal protection<br>Short circuit protected |
|--------------------|---|

### Performance data

|                      |  |
|----------------------|--|
| Supply voltage $U_B$ | 10 ... 30 V, DC, Incl. residual ripple |
| Residual ripple      | 0 ... 15 %, From $U_B$                 |
| Open-circuit current | 0 ... 20 mA                            |

### Outputs

|                                     |            |
|-------------------------------------|------------|
| Number of digital switching outputs | 1 Piece(s) |
|-------------------------------------|------------|

### Switching outputs

|                         |  |
|-------------------------|--|
| Voltage type            | DC   |
| Switching current, max. | 100 mA                                       |
| Switching voltage       | high: $\geq(U_B - 2.5V)$<br>low: $\leq 2.5V$ |

### Switching output 1

|                     |                     |
|---------------------|---------------------|
| Assignment          | Connection 1, pin 4 |
| Switching element   | Transistor, NPN     |
| Switching principle | Dark switching      |

### Timing

|                     |        |
|---------------------|--------|
| Switching frequency | 500 Hz |
| Response time       | 1 ms   |
| Readiness delay     | 300 ms |

### Connection

#### Connection 1

|                    |                              |
|--------------------|------------------------------|
| Function           | Signal OUT<br>Voltage supply |
| Type of connection | Connector                    |
| Thread size        | M12                          |
| Type               | Male                         |
| Material           | Plastic                      |
| No. of pins        | 4 -pin                       |
| Encoding           | A-coded                      |

### Mechanical data

|                       |   |
|-----------------------|---|
| Dimension (W x H x L) | 15 mm x 42.7 mm x 30 mm                               |
| Housing material      | Plastic   |
| Plastic housing       | ABS   |
| Lens cover material   | Plastic   |
| Net weight            | 15 g  |
| Housing color         | Black   |
| Type of fastening     | Through-hole mounting<br>Via optional mounting device |

### Operation and display

|                 |            |
|-----------------|------------|
| Type of display | LED        |
| Number of LEDs  | 2 Piece(s) |

### Environmental data

|                                |               |
|--------------------------------|---------------|
| Ambient temperature, operation | -40 ... 60 °C |
| Ambient temperature, storage   | -40 ... 70 °C |

### Certifications

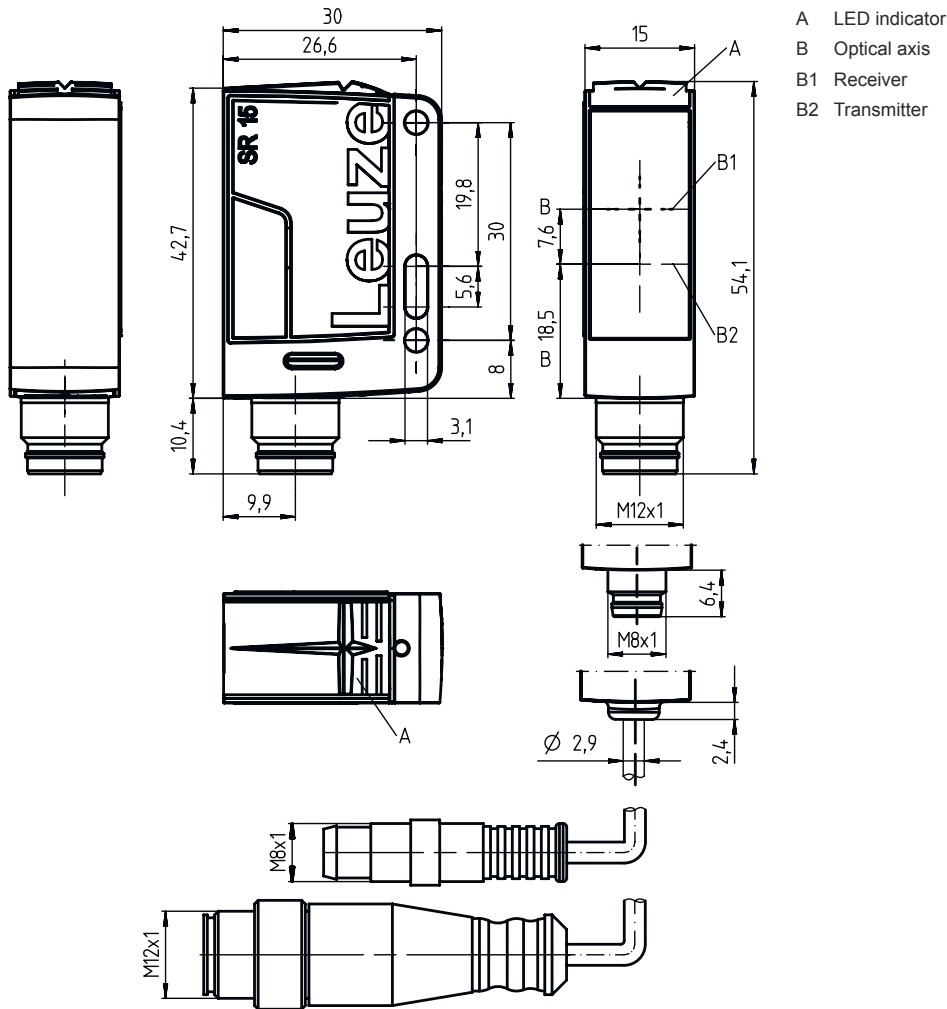
|                      |               |
|----------------------|---------------|
| Degree of protection | IP 67         |
| Protection class     | III           |
| Certifications       | c UL US       |
| Standards applied    | IEC 60947-5-2 |

### Classification

|                       |          |
|-----------------------|----------|
| Customs tariff number | 85365019 |
| eCl@ss 5.1.4          | 27270902 |
| eCl@ss 8.0            | 27270902 |
| eCl@ss 9.0            | 27270902 |
| eCl@ss 10.0           | 27270902 |
| eCl@ss 11.0           | 27270902 |
| ETIM 5.0              | EC002717 |
| ETIM 6.0              | EC002717 |
| ETIM 7.0              | EC002717 |

# Dimensioned drawings

All dimensions in millimeters



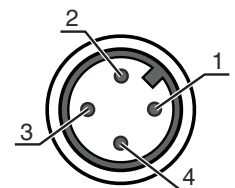
- A LED indicator
- B Optical axis
- B1 Receiver
- B2 Transmitter

## Electrical connection

### Connection 1

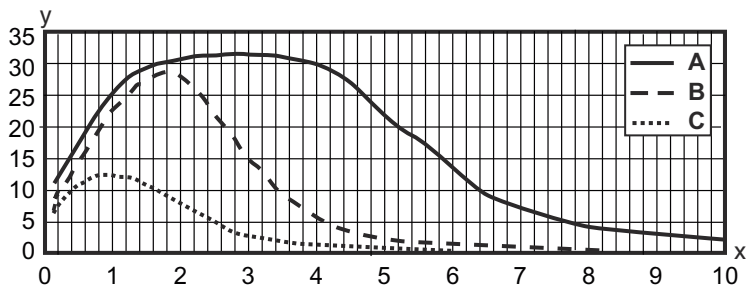
|                    |                |
|--------------------|----------------|
| Function           | Signal OUT     |
|                    | Voltage supply |
| Type of connection | Connector      |
| Thread size        | M12            |
| Type               | Male           |
| Material           | Plastic        |
| No. of pins        | 4 -pin         |
| Encoding           | A-coded        |

| Pin | Pin assignment |
|-----|----------------|
| 1   | V+             |
| 2   | n.c.           |
| 3   | GND            |
| 4   | OUT 1          |



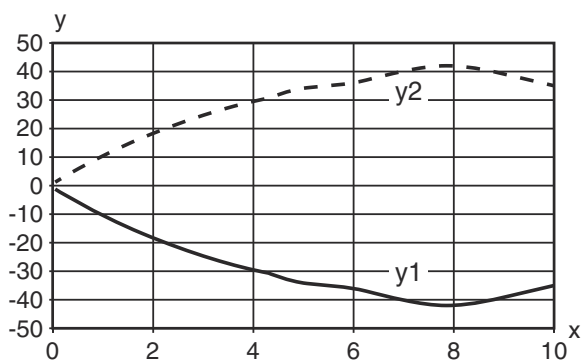
# Diagrams

## Typ. function reserve

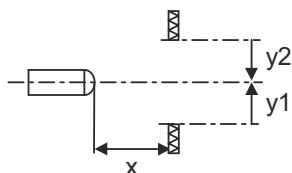


x Reading field distance [mm]  
 y Function reserve  
 A TKS 100x100  
 B TKS 40x60  
 C TKS 20x40

## Typ. response behavior (TKS100x100)




x Distance [m]  
 y Misalignment [mm]








## Operation and display

| LED | Display                  | Meaning                              |
|-----|--------------------------|--------------------------------------|
| 1   | Green, continuous light  | Operational readiness                |
| 2   | Yellow, continuous light | Light path free                      |
|     | Yellow, flashing         | Light path free, no function reserve |

## Reflectors & reflective tapes

|   | Part no. | Designation  | Operating range<br>Operating range | Description  |
|---|----------|--------------|------------------------------------|--|
|  | 50117583 | MTKS 50x50.1 | 0.05 ... 5 m<br>0.05 ... 6 m       | Design: Rectangular<br>Reflective surface: 50 mm x 50 mm<br>Triple reflector size: 1.2 mm<br>Material: Plastic<br>Base material: Plastic<br>Chemical designation of the material: PMMA8N<br>Fastening: Through-hole mounting, Adhesive |

## Reflectors & reflective tapes

|   | Part no. | Designation   | Operating range<br>Operating range | Description  |
|---|----------|---------------|------------------------------------|--|
|    | 50110192 | REF 6-A-50x50 | 0.08 ... 3.5 m<br>0.05 ... 4 m     | Design: Rectangular<br>Reflective surface: 50 mm x 50 mm<br>Triple reflector size: 0.3 mm<br>Material: Plastic<br>Chemical designation of the material: PMMA<br>Fastening: Self-adhesive   |
|    | 50003192 | TK 100x100    | 0.05 ... 8 m<br>0.05 ... 10 m      | Design: Rectangular<br>Reflective surface: 96 mm x 96 mm<br>Triple reflector size: 4 mm<br>Material: Plastic<br>Base material: Plastic<br>Chemical designation of the material: PMMA8N<br>Fastening: Adhesive                          |
|    | 50022816 | TKS 100X100   | 0.05 ... 8 m<br>0.05 ... 10 m      | Design: Rectangular<br>Reflective surface: 96 mm x 96 mm<br>Triple reflector size: 4 mm<br>Material: Plastic<br>Base material: Plastic<br>Chemical designation of the material: PMMA8N<br>Fastening: Through-hole mounting, Adhesive   |
|   | 50081283 | TKS 20X40     | 0.05 ... 2.5 m<br>0.05 ... 3 m     | Design: Rectangular<br>Reflective surface: 16 mm x 38 mm<br>Triple reflector size: 2.3 mm<br>Material: Plastic<br>Base material: Plastic<br>Chemical designation of the material: PMMA8N<br>Fastening: Through-hole mounting, Adhesive |
|  | 50040820 | TKS 40X60     | 0.05 ... 4 m<br>0.05 ... 5 m       | Design: Rectangular<br>Reflective surface: 37 mm x 56 mm<br>Triple reflector size: 4 mm<br>Material: Plastic<br>Base material: Plastic<br>Chemical designation of the material: PMMA8N<br>Fastening: Through-hole mounting, Adhesive   |

## Part number code

Part designation: AAA15d.EE/ ff-HH

|              |  |
|--------------|--|
| <b>AAA15</b> | <b>Operating principle / construction</b><br>HT15: diffuse reflection sensor with background suppression<br>PRK15: retro-reflective photoelectric sensor with polarization filter<br>LS15: throughbeam photoelectric sensor transmitter<br>LE15: throughbeam photoelectric sensor receiver |
| <b>d</b>     | <b>Light type</b><br>n/a: red light<br>l: infrared light   |
| <b>EE</b>    | <b>Equipment</b><br>1: adjustable range<br>D: detection of stretch-wrapped objects   |
| <b>ff</b>    | <b>Switching output / function / OUT1OUT2 (OUT1 = pin 4, OUT2 = pin 2)</b><br>2: NPN transistor output, light switching<br>N: NPN transistor output, dark switching<br>4: PNP transistor output, light switching<br>P: PNP transistor output, dark switching<br>X: pin not used            |

## Part number code

|           |  |
|-----------|--|
| <b>HH</b> | <b>Electrical connection</b><br>n/a: cable, standard length 2000 mm, 4-wire<br>M8: M8 connector, 4-pin (plug)<br>200-M12: cable, length 200 mm with M12 connector, 4-pin, axial (plug)<br>M12: M12 connector, 4-pin (plug) |
|-----------|--|

### Note



A list with all available device types can be found on the Leuze website at [www.leuze.com](http://www.leuze.com).

## Notes

### Observe intended use!



- ⌘ This product is not a safety sensor and is not intended as personnel protection.
- ⌘ The product may only be put into operation by competent persons.
- ⌘ Only use the product in accordance with its intended use.

### For UL applications:



- ⌘ Only for use in "class 2" circuits
- ⌘ These proximity switches shall be used with UL Listed Cable assemblies rated 30V, 0.5A min, in the field installation, or equivalent (categories: CYJV/ CYJV7 or PVVA/PVVA7)

## Further information

- Light source: Average life expectancy 100,000h at an ambient temperature of 25 °C


## Accessories

### Connection technology - Connection cables

|  | Part no. | Designation        | Article          | Description  |
|--|----------|--------------------|------------------|--|
|  | 50130652 | KD U-M12-4A-V1-050 | Connection cable | Connection 1: Connector, M12, Axial, Female, A-coded, 4 -pin<br>Connection 2: Open end<br>Shielded: No<br>Cable length: 5,000 mm<br>Sheathing material: PVC  |
|  | 50130690 | KD U-M12-4W-V1-050 | Connection cable | Connection 1: Connector, M12, Angled, Female, A-coded, 4 -pin<br>Connection 2: Open end<br>Shielded: No<br>Cable length: 5,000 mm<br>Sheathing material: PVC |

## Accessories



### Mounting technology - Mounting brackets

|   | Part no. | Designation | Article         | Description  |
|---|----------|-------------|-----------------|--|
|  | 50040269 | BT 25       | Mounting device | Design of mounting device: Angle, L-shape<br>Fastening, at system: Through-hole mounting<br>Mounting bracket, at device: Screw type<br>Type of mounting device: Rigid<br>Material: Metal |


### Mounting technology - Rod mounts

|  | Part no. | Designation  | Article         | Description  |
|--|----------|--------------|-----------------|--|
|   | 50117829 | BTP 200M-D12 | Mounting system | Design of mounting device: Protection hood<br>Fastening, at system: For 12 mm rod<br>Mounting bracket, at device: Screw type<br>Type of mounting device: Clampable, Adjustable, Turning, 360°<br>Material: Metal   |
|  | 50117255 | BTU 200M-D12 | Mounting system | Design of mounting device: Mounting system<br>Fastening, at system: For 12 mm rod, Sheet-metal mounting<br>Mounting bracket, at device: Screw type, Suited for M3 screws<br>Type of mounting device: Clampable, Adjustable, Turning, 360°<br>Material: Metal |

### Standard reflectors

|   | Part no. | Designation | Article   | Description  |
|---|----------|-------------|-----------|--|
|  | 50081283 | TKS 20X40   | Reflector | Design: Rectangular<br>Reflective surface: 16 mm x 38 mm<br>Triple reflector size: 2.3 mm<br>Material: Plastic<br>Base material: Plastic<br>Chemical designation of the material: PMMA8N<br>Fastening: Through-hole mounting, Adhesive |
|  | 50040820 | TKS 40X60   | Reflector | Design: Rectangular<br>Reflective surface: 37 mm x 56 mm<br>Triple reflector size: 4 mm<br>Material: Plastic<br>Base material: Plastic<br>Chemical designation of the material: PMMA8N<br>Fastening: Through-hole mounting, Adhesive   |

### Reflective tapes for standard applications

|   | Part no. | Designation   | Article         | Description   |
|---|----------|---------------|-----------------|---|
|  | 50108300 | REF 4-A-50x50 | Reflective tape | Design: Rectangular<br>Reflective surface: 50 mm x 50 mm<br>Material: Plastic<br>Chemical designation of the material: PMMA<br>Fastening: Self-adhesive |

## Accessories

### Note



🔗 A list with all available accessories can be found on the Leuze website in the Download tab of the article detailed page.